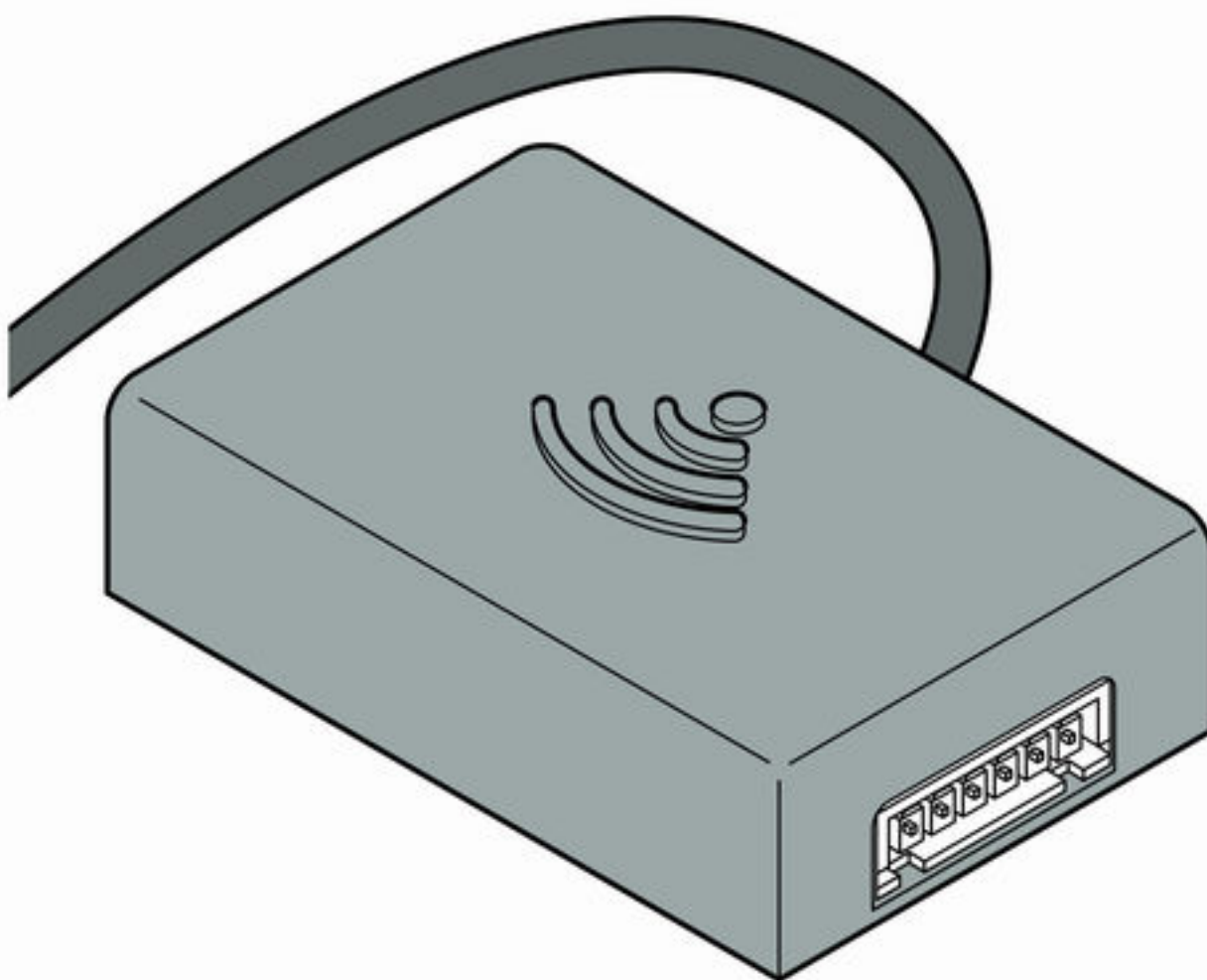


Instructions for Use

Multiplex Trio E WLAN module



for remote control of Multiplex Trio Multiplex Trio E through mobile end devices (Android, iOS, Windows) in direct operation or via the internet

Model
6146.224

Year built (from)
06/2016

viega

Table of contents

1	About these instructions for use	3
	1.1 Target groups	3
	1.2 Labelling of notes	3
	1.3 About this translated version	4
2	Product information	5
	2.1 Standards and regulations	5
	2.2 Safety advice	5
	2.3 Intended use	6
	2.4 Product description	7
	2.4.1 Overview	7
	2.4.2 Technical data	7
3	Handling	8
	3.1 Mounting instructions	8
	3.2 Assembly	9
	3.2.1 Installation situation Trio E or E2	9
	3.2.2 Installation situation Trio E3	10
	3.3 Commissioning	12
	3.3.1 Establishing a connection with mobile end devices	12
	3.4 Disposal	15

1 About these instructions for use

Trade mark rights exist for this document; for further information, go to viega.com/legal.

1.1 Target groups

The information in this instruction manual is directed at the following groups of people:

- Heating and sanitary professionals and trained personnel
- Operators
- Consumers

Individuals without the abovementioned training or qualification are not permitted to mount, install and, if required, maintain this product. This restriction does not extend to possible operating instructions.

The installation of Viega products must take place in accordance with the general rules of engineering and the Viega instructions for use.

1.2 Labelling of notes

Warning and advisory texts are set aside from the remainder of the text and are labelled with the relevant pictographs.



DANGER!

This symbol warns of possible life-threatening injury.



WARNING!

This symbol warns of possible serious injury.



CAUTION!

This symbol warns of possible injury.



NOTICE!

This symbol warns of possible damage to property.



This symbol gives additional information and hints.

1.3 About this translated version

This instruction for use contains important information about the choice of product or system, assembly and commissioning as well as intended use and, if required, maintenance measures. The information about the products, their properties and application technology are based on the current standards in Europe (e.g. EN) and/or in Germany (e.g. DIN/DVGW).

Some passages in the text may refer to technical codes in Europe/Germany. These should serve as recommendations in the absence of corresponding national regulations. The relevant national laws, standards, regulations, directives and other technical provisions take priority over the German/European directives specified in this manual: The information herein is not binding for other countries and regions; as said above, they should be understood as a recommendation.

2 Product information

2.1 Standards and regulations

The following standards and regulations apply to Germany / Europe and are provided as a support feature.

Regulations from section: Mounting the mixing unit

Scope / Notice	Regulations applicable in Germany
230-V connection	VDE 0100 Part 701 (IEC 6036-7-701:2006, modified)

Regulations from section: Maintenance

Scope / Notice	Regulations applicable in Germany
Thermal disinfection after 72 hours of non-use	VDI 6023
Thermal disinfection after 7 days	EN 806-5

2.2 Safety advice



DANGER! **Danger due to electrical current**

An electric shock can lead to burns and serious injury and even death.

- Work on the electrics may only be carried out by trained electricians.
- Switch off the mains voltage before opening the casing.
- Switch off the mains voltage before connecting the power pack.



WARNING!
Risk of scalding from hot water

Excessively hot water can lead to severe scalding, especially in the case of children.

Take the following steps to avoid scalding:

- Do not allow children to play with the control elements unsupervised.
- Disable the temperature safeguard in exceptional cases only.
- Make sure that no one can come into contact with the hot water before carrying out thermal disinfection.



WARNING!
Risk of injury due to control via remote access

Controlling the equipment via remote access is permissible only if there are no persons standing in the direct operating range.

2.3 Intended use

The WLAN module controls the Multiplex Trio E fittings by means of a mobile end device (such as smartphone or tablet). The WLAN module is easy to refit for already installed Multiplex Trio E fittings (art. no. 662295, 682972, 684655).

The installation is permissible for specialist companies only under compliance with the applicable regulations.

Pay attention to the additional notes in the respective instructions for use of the Multiplex Trio E.

2.4 Product description

2.4.1 Overview

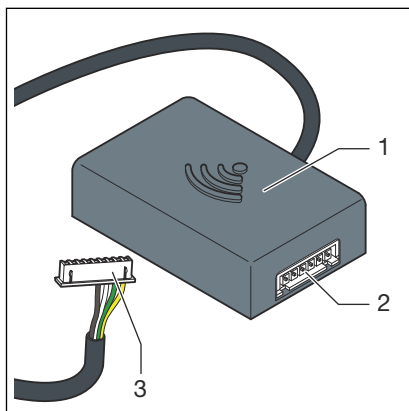


Fig. 1: Overview

- 1 - WLAN module
- 2 - connection socket
- 3 - plug (display)

2.4.2 Technical data

Dimensions H x W x D	63 x 63 x 24 mm
Operating temperature min.-max.	0–60 °C
Rel. humidity min.-max.	5–95 %
Plug	JST XHP6
Cable length	200 mm
Encryption	WPA 2
Network	WLAN (802.11 b/g/n)
IP Code	IP 20
Protection class	III
Power supply	6–15 V
Transmission frequency	2.4 Ghz
Material (casing)	ABS



NOTICE!

Regularly update your browser and operating system. Should you have any questions on compatibility, please contact the Viega Service Center.

3 Handling

3.1 Mounting instructions

Refitting an existing Multiplex Trio E fitting

The WLAN module is mounted in different manners, depending on the existing Multiplex Trio E-fitting:

- Multiplex Trio E and E2 (↪ Chapter 3.2.1 'Installation situation Trio E or E2' on page 9)
- Multiplex Trio E3 (↪ Chapter 3.2.2 'Installation situation Trio E3' on page 10)

Mounting the Multiplex Trio E fitting together with the WLAN module

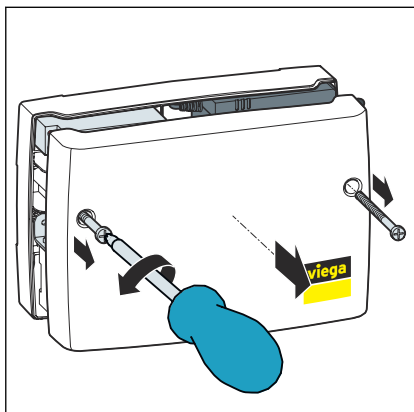
If the WLAN module is mounted together with the Multiplex Trio E fitting, the assembly steps for the Multiplex Trio E fitting must be observed as well.

Connect the existing connection cables in the following plugging order:

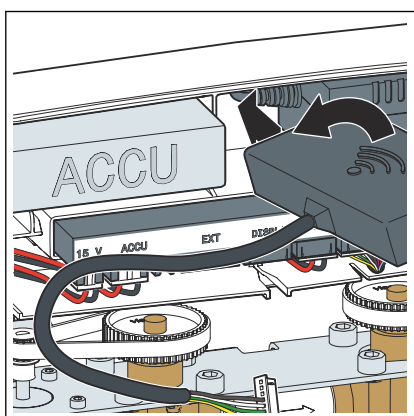
1	TLI A
2	TLI B
3	Motor
4	Display
5	BATTERY
6	15 V
7 !	230-V connection

3.2 Assembly

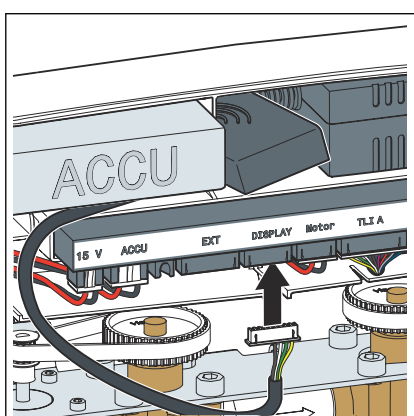
3.2.1 Installation situation Trio E or E2



- Use a Phillips-tip screwdriver to remove the two screws from the casing, and lift off the cover.

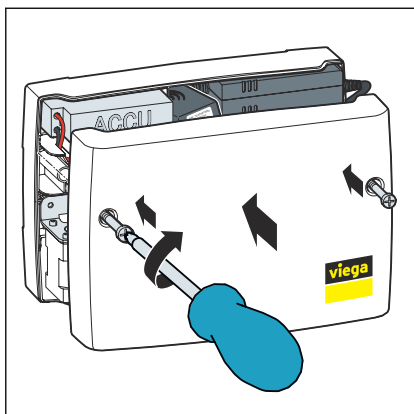


- Insert the WLAN module (cable outlet left-hand side) at an angle into the gap between battery and power pack.



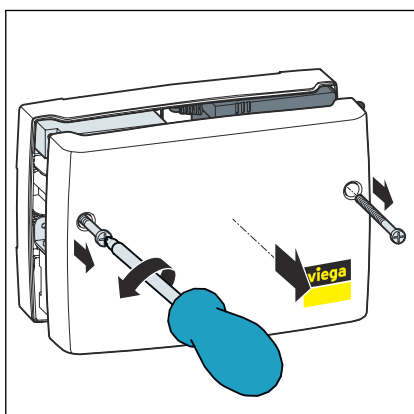
- Plug the connection cable of the WLAN module into the slot with the designation [Display].

NOTICE! The Multiplex Trio E fitting (model 6146, without display at the control elements) does not have the designation [Display] at the slot for the connection cable. Regardless, install the connection cable as described.

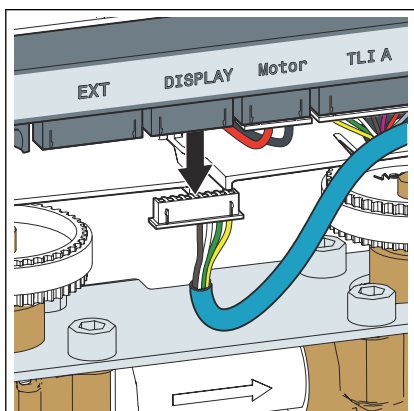


- Replace the casing cover and use the Phillips-tip screwdriver to tighten the two screws.

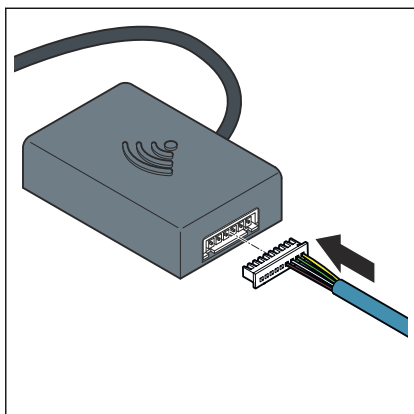
3.2.2 Installation situation Trio E3



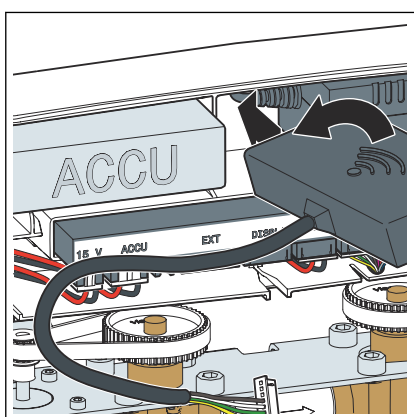
- Use a Phillips-tip screwdriver to remove the two screws from the casing, and lift off the cover.



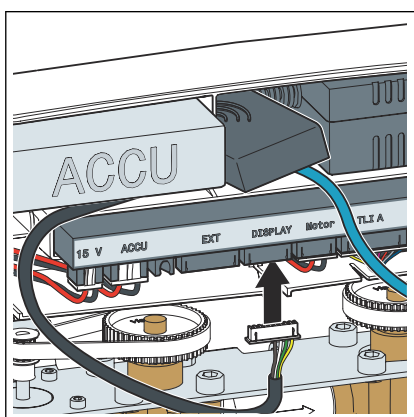
- Remove the plug at the [Display] slot.



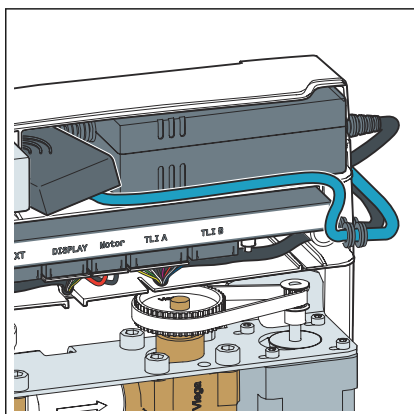
➤ Plug the removed display cable into the WLAN module.



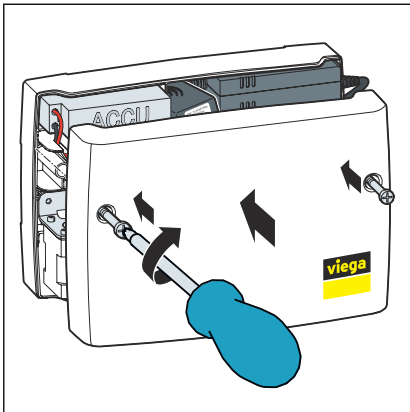
➤ Insert the WLAN module (cable outlet left-hand side) at an angle into the gap between battery and power pack.



➤ Plug the connection cable of the WLAN module into the [Display] slot.



➤ Lay the display cable in the cable conduit below the battery.



- Replace the casing cover and use the Phillips-tip screwdriver to tighten the two screws.

3.3 Commissioning

3.3.1 Establishing a connection with mobile end devices

There are two ways to connect the Multiplex Trio E fitting to mobile end devices.

- PEER_TO_PEER connection
- via the router in the home network (Internet connection required)

Viega recommends using a direct connection only during the initial installation. For daily use, integrating the Multiplex Trio E fitting into the home network is more comfortable. To use this variant, you will additionally need a free-of-charge user account with Viega.

Establishing a PEER_TO_PEER connection

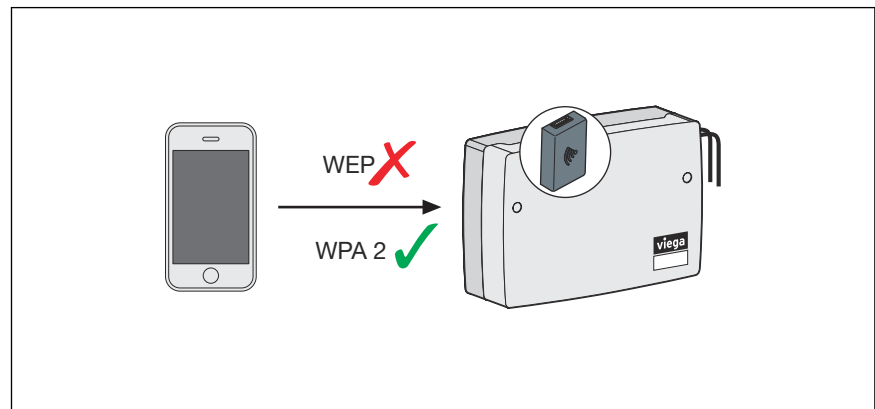
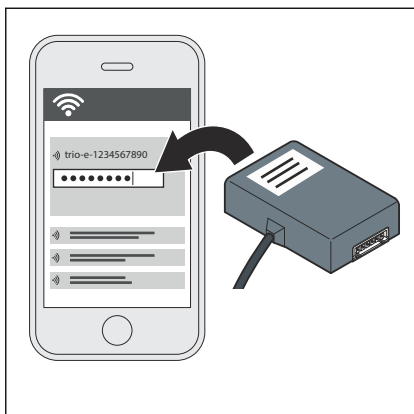


Fig. 2: PEER_TO_PEER connection

- On your mobile end device, select *Settings* > *WLAN* to display the available WLAN networks.
- Select a network, e.g. "trio-e-1234567890".



- Enter the password and connect (see the ten-digit password on the label of the WLAN module).
 - You have established a direct connection between the mobile end device and the WLAN module.
- Open the Internet browser on the mobile end device. Type *1.1.1.1* in the address line and press Enter to confirm.
 - The user interface of the Multiplex Trio E is displayed.

Connecting the WLAN module to the home network

Requirements:

- A direct connection has been established between an end device and the WLAN module.
- The home network must have a good signal strength in the area of the Multiplex Trio E fitting.
- The home network designation (SSID) contains only permitted characters (e.g. no exclamation marks).

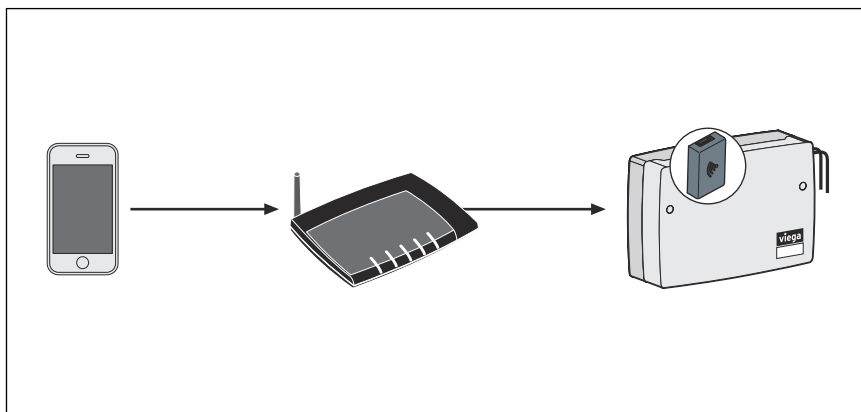


Fig. 3: Connecting the WLAN module to the home network

- Open the Internet browser on the mobile end device. Type *1.1.1.1* in the address line and press Enter to confirm.
 - The user interface of the Multiplex Trio E is displayed.
- In the menu, open the [Network] option.
- Select the personal home network from the list of available networks.
- Enter your personal WLAN password for the home network.
 - The WLAN module establishes a connection with the home network (router).

Once the connection has been established, the window remains inactive and can be closed.
- On your mobile end device, select *Settings > WLAN* to display the available WLAN networks and to connect to the home network.

As soon as the WLAN module connects to the router, the network established by the WLAN module is no longer displayed.



When the router is disconnected from the mains, the network established by the WLAN module will be displayed once more after approx. 6 minutes.

Creating a user account on the Internet

- Open the Internet browser on the mobile end device.
- Type `https://trio-e.viega.de` in the address line and press Enter to confirm.
 - ◇ The login screen of the Multiplex Trio E is displayed.
- Click [Register] in the login window.
- Enter the personal data.



Once you have registered, you will receive an email to the indicated email account. Copy this Internet address from the email into the address line of your browser and press Enter to complete the registration. You have created your user account, and it is now available to you.

Adding the WLAN module to the user account

In the user account, the WLAN module must be assigned to a certain object (e.g. *own house, rental apartment, Station Road*). If several objects are managed in one user account, you can distinguish between the objects through this object name and then control the individual devices separately.

- Open the Internet browser on the mobile end device. Type `https://trio-e.viega.de` in the address line and press Enter to confirm.
 - ◇ The login screen of the Multiplex Trio E is displayed.
- Enter your email and password and click [Login].
 - ◇ The device overview is displayed.
When you do the initial installation, no device is connected yet.
- Click the blue Plus icon (create a new object).
- Give the object a meaningful name and press [OK] to confirm your entry.
 - ◇ The new object is shown in the device overview.
- Click on [Add device] in the top menu bar.
- Enter the serial number and password of the WLAN module (see WLAN module label).
- Select the correct object from the Object selection menu.

- Press [Add] to confirm your entry.
 - ◻ The WLAN module establishes a connection with the object. The device overview is displayed.

Opening the user interface

Requirements:

- You already have a personal user account.
- The WLAN module is connected to the home network (router).
 - ◻ The login screen of the Multiplex Trio E is displayed.

- Enter your email and password and click [Login].

INFO! If you have forgotten your password, click or tap on [Forgotten password] on the login page. Then enter your email address into the input field and confirm via [RESET PASSWORD]. You will receive an email to the indicated email account. The link in the email will take you to a page on which you can create a new password.

- (Optional): Click the *Link* button to create a rapid access (favourite).
- Press the [Start] button to call up the user interface of the Multiplex Trio E.



3.4 Disposal

Separate the product and packaging materials (e. g. paper, metal, plastic or non-ferrous metals) and dispose of in accordance with valid national legal requirements.



Viega GmbH & Co. KG
service-technik@viega.de
viega.com

INT • 2022-08 • VPN160357

