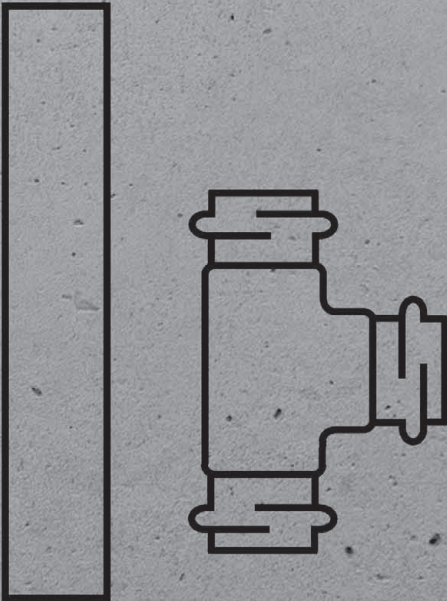


Sanpress LF with SC-Contur, labs-free

Piping technology
gunmetal, labs-free



Press connector system (labs-free) with press connectors made of gunmetal, pipes made of stainless steel material Nos. 1.4401 and 1.4521 in acc. with DIN EN 10088, DIN EN 10312, DVGW worksheet GW 541, system certification for connectors and pipes in acc. with DVGW worksheet W 534, for drinking water installations in acc. with DIN 1988. For dimensionally stable concealed and pre-wall installations of manifold and riser pipes in Viega component assembly.

The press connector system SanpressLF is free from network destructive substances (labs) such as silicone, fat, oil etc. and is therefore especially suitable for the use of pipeline installations in paint shops.

Press connectors

All sizes with SC-Contur – connections, which remain unpressed become visible when the system is filled. The SC-Contur is certified and fulfils the requirements of DVGW worksheet W 534, point 12.14, connectors with forced leakage. During leakage tests with water, Viega guarantees the identification of unpressed connections in the pressure range 0,1 MPa–0,65 MPa, in the case of a dry leakage test with compressed air or noble gases from 22 hPa–0.3 MPa.

Marking

Blue dot on the press connector

Sealing elements

EPDM, black (ethylene-propylene-dien-monomer rubber); up to 110 °C; not resistant against hydrocarbon solvent, chlorinated hydrocarbon solvents, turpentine, petrol

Pipes

Stainless steel laser-welded and made of corrosion-proof stainless steel

- Material-No.1.4401 (AISI 316L) (X5CrNiMo 17-12-2), with 2.3 % molybdenum for increased durability; yellow plug
- Material-No.1.4521 (AISI 444) (X2CrMoTi 18-2), with PRE-value 24.1; green plugs

Dimensions/Material

Standard sizes: d 12; 15; 18; 22; 28; 35; 42; 54 made of gunmetal

XL sizes: d 76.1; 88.9; 108.0 made of gunmetal

Press connectors with threaded connection made of gunmetal

Areas of application

Drinking water
Rainwater
Compressed air system
Agriculture
Industry

Special applications

Shipbuilding

Use of the system for application areas and media other than those described here must be agreed with Viega Service Center.

Operating conditions

Drinking water installations

- Drinking water without restrictions in acc. with DWO
- Operating temperature max. 85 °C
- Operating pressure max. 1.6 MPa

Irrelevant of the direction of flow, mixed installations are permitted.

Note

The stainless steel pipes should be protected against high concentrations of chloride generated by both the medium and by external factors.

Certification

Pipes 1.4521 (d 12–108.0)

- DW-7301BS0375

Pipes 1.4401 (d 12–108.0)

- DV-7301BS0411

System with pipe 1.4521 (d 12–108.0)

- DW-8501BS0377

System with pipe 1.4401 (d 12–108.0)

- DW-8501AP3032

Use of press tools

The functional safety of the Viega press connector systems is primarily dependent on the perfect condition of the press tools and press machines used. For this reason, for the production of press connections, we recommend the use of Viega press tools and their regular inspection by authorised service points.

Technical data

Press connectors and components are constantly being optimised. If required, the current Z and installation dimensions can be obtained from the download area of the Viega homepage: viega.com

INDEX

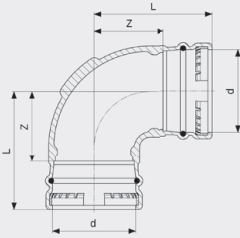
Elbows	4
T-pieces	5
Adapter pieces/adaptor elbows	6
Couplings	7
Reductions	8
Screw fittings	8
Caps	9
Flanges	9
Wall plates	10
Gunmetal shut-off valves	11
Gunmetal ball valves	12



GTIN-Code (Global Trade Item Number, previously EAN-Code)

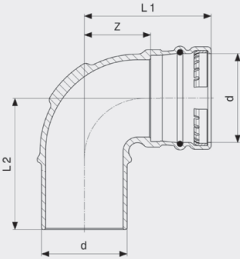
The GTIN-Code composed out of the constant manufacturer number 4015211 and a six-digit article code - in this example 305 611. The exchange of the last six digits against the article code shows the GTIN-Code.

ELBOWS



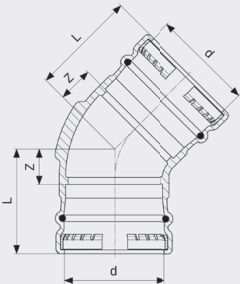
**Sanpress XL LF Elbow 90°
Model 2216XLLF**

article	d	Z	L
432 256	76.1	44	97
432 263	88.9	67	120
432 270	108.0	77	140



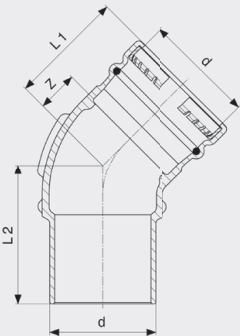
**Sanpress XL LF Elbow 90°
- gunmetal
Model 2216.1XLLF**

article	d	Z	L1	L2
432 287	76.1	44	97	112
432 294	88.9	67	120	125
432 300	108.0	76	140	145



**Sanpress XL LF Elbow 45°
- gunmetal
Model 2226XLLF**

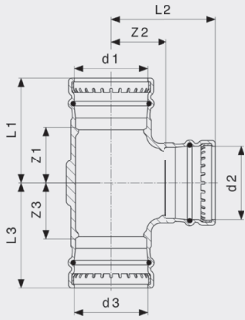
article	d	Z	L
432 317	76.1	30	83
432 324	88.9	32	85
432 331	108.0		



**Sanpress XL LF Elbow 45°
- gunmetal
Model 2226.1XLLF**

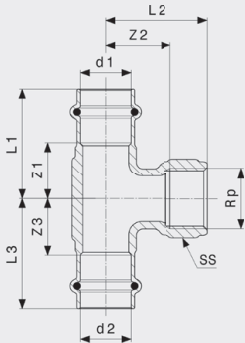
article	d	Z	L1	L2
432 348	76.1	29	83	100
432 355	88.9	32	85	104
432 362	108.0	36	99	128

T-PIECES



Sanpress XL LF T-piece
- gunmetal
Model 2218XLLF

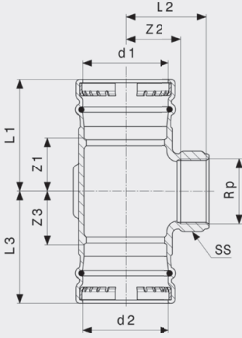
article	d1	d2	d3	Z1	Z2	Z3	L1	L2	L3
432 409	76.1	54	76.1	47	65	47	100	105	100
432 379	76.1	76.1	76.1	61	61	61	114	114	114
432 416	88.9	54	88.9	46	70	46	100	110	100
432 423	88.9	76.1	88.9	62	67	62	115	120	115
432 386	88.9	88.9	88.9	67	67	67	120	120	120
432 430	108.0	54	108.0	47	80	47	110	120	110
432 447	108.0	76.1	108.0	62	77	62	125	130	125
432 454	108.0	88.9	108.0	67	77	67	130	130	130
432 393	108.0	108.0	108.0	77	77	77	140	140	140



Sanpress LF T-piece
- gunmetal
Model 2217.2LF

article	d1	Rp	d2	Z1	Z2	Z3	L1	L2	L3	SS
430 245	15	1/2	15	19	11	19	41	21	41	
430 757	18	1/2	18	18	8	18	40	24	40	26
430 764	22	3/4	22	19	13	19	42	28	42	26
430 771	22	3/4	22	25	29	25	48	45	48	32
430 788	28	1/2	28	21	17	21	45	32	45	26
430 795	28	3/4	28	29	34	29	52	50	52	32
430 801	35	1/2	35	19	20	19	45	35	45	26
430 818	35	1	35	34	36	34	60	55	60	39
430 825	42	1/2	42	19	35	19	55	50	55	28
430 832	42	1	42	29	40	29	65	59	65	39
430 849	54	1/2	54	26	40	26	66	55	66	28
430 856	54	1	54	30	47	30	70	66	70	39

SS = wrench size

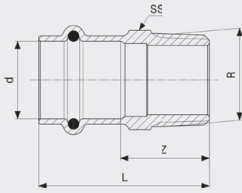


Sanpress XL LF T-piece
- gunmetal
Model 2217.2XLLF

article	d1	Rp	d2	Z1	Z2	Z3	L1	L2	L3	SS
432 461	76.1	¾	76.1	32	51	32	85	68	85	32
432 485	88.9	¾	88.9	32	58	32	85	74	85	32
432 508	108.0	¾	108.0	32	67	32	95	83	95	32

SS = wrench size

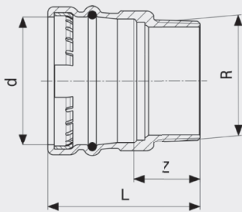
ADAPTER PIECES/ADAPTER ELBOWS



Sanpress LF Adapter
- gunmetal
Model 2211LF

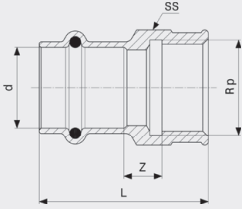
article	d	R	Z	L	SS
430 863	15	½	24	46	19
430 870	15	¾	28	50	22
430 887	18	½	22	44	22
430 894	18	¾	27	49	22
430 900	22	½	25	49	27
430 917	22	¾	26	49	27
430 924	22	1	33	56	30
430 931	28	1	32	55	34
430 948	28	1¼	34	58	34
430 955	35	1	28	53	40
430 962	35	1¼	34	60	43
430 979	35	1½	37	62	50
430 986	42	1¼	29	65	48
430 993	42	1½	30	66	50
431 006	54	1½	38	78	68
431 013	54	2	39	79	68

SS = wrench size



Sanpress XL LF Adapter
- gunmetal
Model 2211XLLF

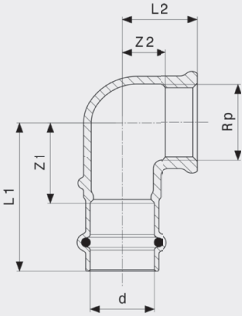
article	d	R	Z	L
432 522	76.1	2½	42	95
432 539	88.9	3	47	100
432 546	108.0	4	45	110



Sanpress LF Adapter
- gunmetal
Model 2212LF

article	d	Rp	Z	L	SS
431 020	15	1/2	7	44	26
431 037	15	3/4	4	37	20
431 044	18	1/2	6	43	26
431 051	18	3/4	7	45	30
431 068	22	1/2	6	44	26
431 075	22	3/4	7	47	30
431 082	22	1	9	52	38
431 099	28	1	9	52	38
431 105	28	1 1/4	11	56	47
431 112	35	1	3	48	38
431 129	35	1 1/4	7	54	47
431 136	42	1 1/4	4	61	47
431 143	42	1 1/2	4	61	53
431 150	54	1 1/2	11	72	68
431 167	54	2	9	75	70

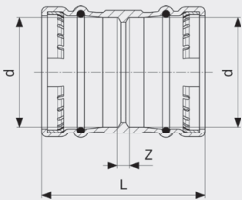
SS = wrench size



Sanpress LF Adapter elbow 90°
- gunmetal
Model 2214.2LF

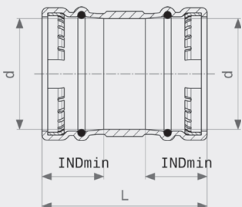
article	d	Rp	Z1	Z2	L1	L2
430 306	15	1/2	22	7	44	22
430 313	15	3/4	28	8	50	24
430 320	18	1/2	24	7	46	22
430 337	18	3/4	28	8	50	24
430 344	22	1/2	28	10	52	26
430 351	22	3/4	28	10	52	26
430 368	22	1	36	10	59	29
430 375	28	1	36	13	59	32
430 382	35	1 1/4	40	17	66	38

COUPLINGS



Sanpress XL LF Coupling
- gunmetal
Model 2215XLLF

article	d	Z	L
432 553	76.1	9	115
432 560	88.9	9	115
432 577	108.0	9	135

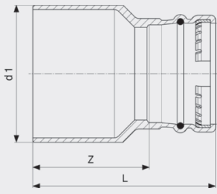


Sanpress XL LF Sliding coupling
- gunmetal
Model 2215.5XLLF

article	d	INDmin	L
432 584	76.1	55	115
432 591	88.9	55	115
432 607	108.0	65	135

INDmin = insertion depth minimum

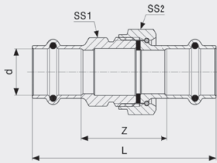
REDUCTIONS



Sanpress XL LF Reducer
- gunmetal
Model 2215.1XLLF

article	d1	d2	Z	L
432 614	76.1	54	81	121
432 621	88.9	54	86	126
432 638	88.9	76.1	72	125
432 645	108.0	54	106	146
432 850	108.0	76.1	92	145
432 867	108.0	88.9	87	140

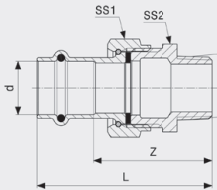
SCREW FITTINGS



Sanpress LF Screw fitting
- gunmetal
Model 2260LF

article	d	Z	L	SS1	SS2
431 464	15	33	77	25	30
431 471	18	36	80	24	30
431 488	22	42	89	31	37
431 495	28	48	94	40	46
431 501	35	48	100	45	53
431 518	42	49	121	50	60
431 525	54	53	133	70	78

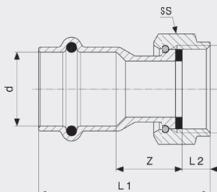
SS = Spanner size
SS = spanner size



Sanpress LF Adapter union
- gunmetal
Model 2265LF

article	d	R	Z	L	SS1	SS2
431 631	15	1/2	43	65	30	27
431 655	18	1/2	45	67	30	27
431 679	22	1/2	46	69	37	34
431 686	22	3/4	50	74	37	34
431 709	28	1	54	78	46	44
431 716	35	1 1/4	63	88	53	50
431 723	42	1 1/2	65	101	60	55
431 730	54	2	67	107	78	70

SS = Spanner size
SS = spanner size

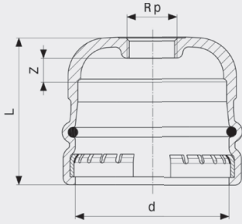


Sanpress LF Connection screw fitting
- gunmetal
Model 2263LF

article	d	G	Z	L1	L2	SS
431 839	15	3/4	12	34	8	30
431 853	18	3/4	14	36	8	30
431 860	18	1	11	33	8	36
431 877	22	3/4	20	44	8	30
431 884	22	1	16	39	8	37
431 914	28	1 1/4	18	42	10	46
479 459	35	1 1/2	18	44	10	53
431 938	35	2	14	51	12	64
431 945	42	1 3/4	22	10	60	58
431 952	42	2	20	56	14	66
431 969	54	2 3/8	13	53	12	78
431 976	54	2 1/2	16	56	16	84

SS = wrench size

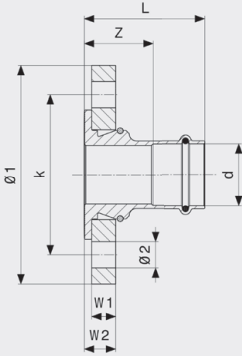
CAPS



Sanpress XL LF Cap
- gunmetal
Model 2256XLLF

article	d	Rp	Z	L
432 898	76.1	¾	12	76
432 904	88.9	¾	11	77
432 911	108.0	¾	15	89

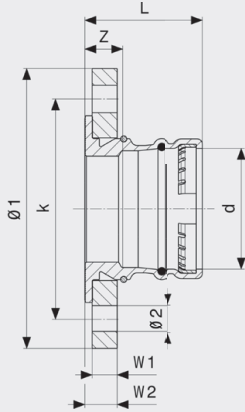
FLANGES



Sanpress LF Flange adapter
- gunmetal
Model 2259.5LF

article	DN	d	Z	L	W1	W2	Ø1	Ø2	k	n
491 079	25	28	42	65	16	21	115	14	85	4
491 086	32	35	44	70	16	21	140	18	100	4
491 093	40	42	47	83	16	21	150	18	110	4
491 109	50	54	50	90	16	21	165	18	125	4

Ø = diameter
k = bolt circle diameter
n = number of holes

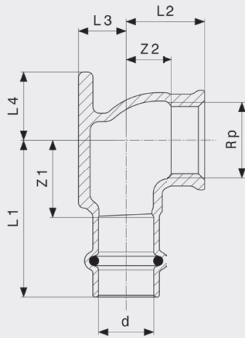


Sanpress XL LF Flange adapter
- gunmetal
Model 2259.5XLLF

article	DN	d	Z	L	W1	W2	Ø1	Ø2	k	n
491 116	65	76.1	25	78	16	21	185	18	145	8
491 123	80	88.9	27	80	18	23	200	18	160	8
491 130	100	108.0	17	80	18	23	220	18	180	8

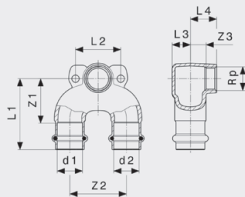
Ø = diameter
k = bolt circle diameter
n = number of holes

WALL PLATES



Sanpress LF Wall plate
- gunmetal
Model 2225.5LF

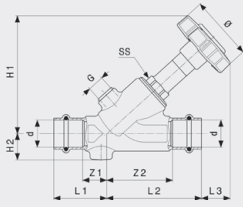
article	d	Rp	Z1	Z2	L1	L2	L3	L4
432 027	15	½	22	7	44	22	13	19
432 034	18	½	22	7	44	22	14	19
432 058	22	½	26	9	50	24	18	21
434 601	22	¾	26	11	50	27	18	21



Sanpress LF Double wall plate
- gunmetal
Model 2228.7LF

article	d1	Rp	d2	Z1	Z2	Z3	L1	L2	L3	L4
717 407	15	½	15	34	50	8	56	40	13	23
717 414	18	½	18	34	50	8	56	40	14	23
717 421	22	½	22	22	40	50	63	40	16	23

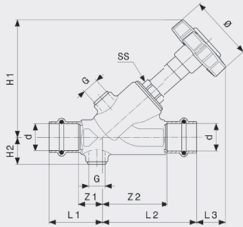
GUNMETAL SHUT-OFF VALVES



**Easytop LF Slanted seat valve
Model 2237LF**

article	DN	d	Z1	Z2	L1	L2	L3	H1	H2	Ø	G	SS
564 896	15	15	17	44	39	66	20	81	19	55	1	19
564 902	15	18	17	44	39	66	20	81	19	55	1	19
564 919	20	22	20	54	43	77	23	94	21	55	1	19
564 926	25	28	22	66	46	89	30	117	24	70	1	27
564 933	32	35	24	80	50	105	32	135	27	70	1	27
564 940	40	42	29	84	65	120	40	156	31	90	1	36
565 152	50	54	30	105	70	145	40	181	37	90	1	41

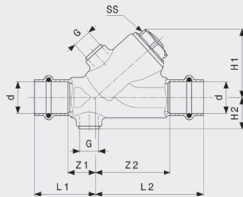
Ø = diameter
SS = wrench size



**Easytop LF CRV slanted seat valve
Model 2238LF**

article	DN	d	Z1	Z2	L1	L2	L3	H1	H2	Ø	G	SS
565 169	15	15	17	44	39	66	17	80	20	55	1/4	19
565 176	15	18	17	44	39	66	17	80	20	55	1/4	19
565 183	20	22	20	54	43	77	19	92	22	55	1/4	19
565 206	25	28	22	66	46	89	26	111	26	70	1/4	27
565 213	32	35	24	80	50	105	27	126	28	70	1/4	27
565 220	40	42	29	84	65	120	35	148	32	90	1/4	36
565 237	50	54	30	105	70	145	34	170	38	90	1/4	41

Ø = diameter
SS = wrench size

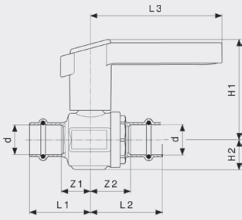


**Easytop LF Backflow preventer
Model 2239LF**

article	DN	d	Z1	Z2	L1	L2	H1	H2	SS	G
565 244	15	15	17	44	39	66	41	20	19	1
565 251	15	18	17	44	39	66	41	20	19	1
565 268	20	22	20	54	43	77	49	22	25	1
565 275	25	28	22	66	46	89	58	26	30	1
565 282	32	35	24	80	50	105	69	28	27	1
565 299	40	42	29	84	65	120	81	32	36	1
565 305	50	54	30	105	70	145	92	38	41	1

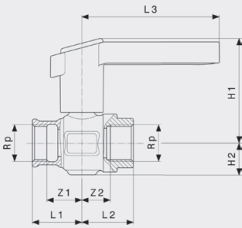
SS = wrench size

GUNMETAL BALL VALVES



**Easytop LF Ball valve
Model 2270LF**

article	DN	d	Z1	Z2	L1	L2	L3	H1	H2
575 304	15	15	20	26	42	48	98	73	19
575 311	15	18	20	26	42	48	98	73	18
575 328	20	22	22	28	45	52	98	74	22
575 335	25	28	26	36	50	59	112	89	26
575 342	32	35	31	37	56	63	113	100	32
575 359	40	42	33	33	69	69	119	125	39
575 366	50	54	45	47	85	87	119	133	47



**Easytop LF Ball valve
Model 2270.2LF**

article	DN	Rp	Z1	Z2	L1	L2	L3	H1	H2	SS
632 540	15	1/2	15	16	30	31	98	73	19	27
632 564	20	3/4	19	20	35	36	98	75	23	34
632 571	25	1	21	24	40	43	112	89	26	41
632 588	32	1 1/4	27	29	49	51	113	100	33	50
632 595	40	1 1/2	32	34	54	56	119	125	40	60
632 601	50	2	38	44	64	70	119	133	48	74

SS = wrench size

order code	page	order code	page	order code	page	order code	page	order code	page
430 245	5	431 945	8	565 268	11				
430 306	7	431 952	8	565 275	11				
430 313	7	431 969	8	565 282	11				
430 320	7	431 976	8	565 299	11				
430 337	7	432 027	10	565 305	11				
430 344	7	432 034	10	575 304	12				
430 351	7	432 058	10	575 311	12				
430 368	7	432 256	4	575 328	12				
430 375	7	432 263	4	575 335	12				
430 382	7	432 270	4	575 342	12				
430 757	5	432 287	4	575 359	12				
430 764	5	432 294	4	575 366	12				
430 771	5	432 300	4	632 540	12				
430 788	5	432 317	4	632 564	12				
430 795	5	432 324	4	632 571	12				
430 801	5	432 331	4	632 588	12				
430 818	5	432 348	4	632 595	12				
430 825	5	432 355	4	632 601	12				
430 832	5	432 362	4	717 407	10				
430 849	5	432 379	5	717 414	10				
430 856	5	432 386	5	717 421	10				
430 863	6	432 393	5						
430 870	6	432 409	5						
430 887	6	432 416	5						
430 894	6	432 423	5						
430 900	6	432 430	5						
430 917	6	432 447	5						
430 924	6	432 454	5						
430 931	6	432 461	6						
430 948	6	432 485	6						
430 955	6	432 508	6						
430 962	6	432 522	6						
430 979	6	432 539	6						
430 986	6	432 546	6						
430 993	6	432 553	7						
431 006	6	432 560	7						
431 013	6	432 577	7						
431 020	7	432 584	7						
431 037	7	432 591	7						
431 044	7	432 607	7						
431 051	7	432 614	8						
431 068	7	432 621	8						
431 075	7	432 638	8						
431 082	7	432 645	8						
431 099	7	432 850	8						
431 105	7	432 867	8						
431 112	7	432 898	9						
431 129	7	432 904	9						
431 136	7	432 911	9						
431 143	7	434 601	10						
431 150	7	479 459	8						
431 167	7	491 079	9						
431 464	8	491 086	9						
431 471	8	491 093	9						
431 488	8	491 109	9						
431 495	8	491 116	10						
431 501	8	491 123	10						
431 518	8	491 130	10						
431 525	8	564 896	11						
431 631	8	564 902	11						
431 655	8	564 919	11						
431 679	8	564 926	11						
431 686	8	564 933	11						
431 709	8	564 940	11						
431 716	8	565 152	11						
431 723	8	565 169	11						
431 730	8	565 176	11						
431 839	8	565 183	11						
431 853	8	565 206	11						
431 860	8	565 213	11						
431 877	8	565 220	11						
431 884	8	565 237	11						
431 914	8	565 244	11						
431 938	8	565 251	11						

model no.	page	model no.	page	model no.	page	model no.	page	model no.	page
2211LF	6								
2211XLLF	6								
2212LF	7								
2214.2LF	7								
2215.1XLLF	8								
2215.5XLLF	7								
2215XLLF	7								
2216.1XLLF	4								
2216XLLF	4								
2217.2LF	5								
2217.2XLLF	6								
2218XLLF	5								
2225.5LF	10								
2226.1XLLF	4								
2226XLLF	4								
2228.7LF	10								
2237LF	11								
2238LF	11								
2239LF	11								
2256XLLF	9								
2259.5LF	9								
2259.5XLLF	10								
2260LF	8								
2263LF	8								
2265LF	8								
2270.2LF	12								
2270LF	12								