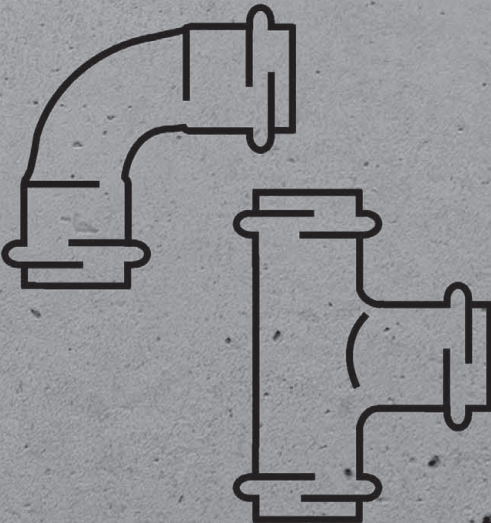


**Profipress CR with SC-Contur**

Piping technology  
chrome-plated copper



**Press connector system with press connectors made of copper and gunmetal tested in acc. with DVGW worksheet W 534 with DVGW test seal and pipes made of copper in acc. with DINEN 1057 in acc. with DVGW worksheet GW 392.**

**Suitable for drinking water installations in acc. with DIN 1988.**

**For dimensionally stable concealed and pre-wall installations of manifold and riser pipes in Viega component assembly.**

#### **Press connectors**

All sizes with SC-Contur – connections, which remain unpressed become visible when the system is filled. The SC-Contur is certified and fulfils the requirements of DVGW worksheet W 534, point 12.14, connectors with forced leakage. During leakage tests with water, Viega guarantees the identification of unpressed connections in the pressure range 0.1 MPa–0.65 MPa, in the case of a dry leakage test with compressed air or noble gases from 22 hPa–0.3 MPa.

#### **Sealing elements**

EPDM

#### **Dimensions/Material**

Standard sizes: d 12; 15; 18 made of copper  
Press connectors with threaded connection made of gunmetal

#### **Areas of application**

Drinking water  
Heating/Radiator connection

Use for application areas and media other than those described here must be agreed with Viega Service Center through a material request.

#### **Operating conditions**

Please find the maximum operating temperatures and pressures of the individual areas of use in the technical documentation.

#### **Use of press tools**

The functional safety of the Viega press connector systems is primarily dependent on the perfect condition of the press tools and press machines used. For this reason, for the production of press connections, we recommend the use of Viega press tools and their regular inspection by authorised service points.

#### **Technical data**

Press connectors and components are constantly being optimised. If required, the current Z and installation dimensions can be obtained from the download area of the Viega homepage: [viega.com](http://viega.com)

INDEX

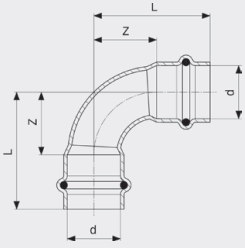
Elbows	4
T-pieces	5
Adapter pieces/adaptor elbows	5
Couplings	6
Reductions	6



**GTIN-Code (Global Trade Item Number, previously EAN-Code)**

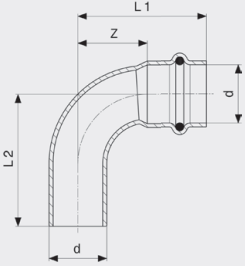
The GTIN-Code composed out of the constant manufacturer number 4015211 and a six-digit article code - in this example 305 611. The exchange of the last six digits against the article code shows the GTIN-Code.

**ELBOWS**



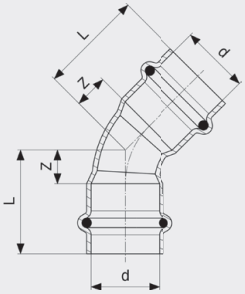
**Profipress CR Elbow 90°**  
- chrome-plated copper  
**Model 2416CR**

article	d	Z	L
706 142	12	14	32
706 159	15	16	38
706 166	18	18	40



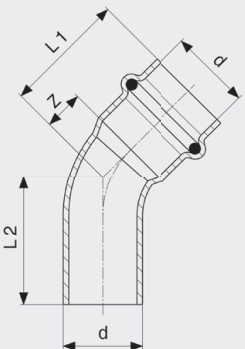
**Profipress CR Elbow 90°**  
- chrome-plated copper  
**Model 2416.1CR**

article	d	Z	L1	L2
706 173	12	14	32	34
706 180	15	16	38	40
706 197	18	18	40	42



**Profipress CR Elbow 45°**  
- chrome-plated copper  
**Model 2426CR**

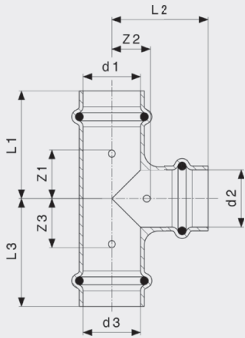
article	d	Z	L
706 203	12	6	24
706 210	15	7	29
706 227	18	7	29



**Profipress CR Elbow 45°**  
- chrome-plated copper  
**Model 2426.1CR**

article	d	Z	L1	L2
706 234	12	6	24	26
706 241	15	7	29	29
706 258	18	7	29	30

**T-PIECES**

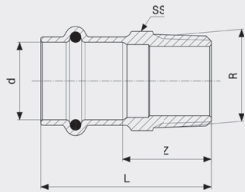


**Profipress CR T-piece**  
- chrome-plated copper  
**Model 2418CR**

article	d1	d2	d3	Z1	Z2	Z3	L1	L2	L3
706 333	12	12	12	18	9	18	36	27	36
706 340	15	12	12	16	12	20	38	30	38
706 357	15	12	15	16	12	16	38	30	38
706 364	15	15	12	18	11	22	40	33	40
706 371	15	15	15	19	11	19	40	33	40
706 388*	15	18	15	20	13	20	42	35	42
706 395*	18	12	15	16	13	21	38	31	43
706 401	18	12	18	16	13	16	38	31	38
706 418*	18	15	15	18	13	23	40	35	45
706 425	18	15	18	18	13	18	40	35	40
706 432*	18	18	15	20	13	24	42	35	46
706 449	18	18	18	20	13	20	42	35	42

\* = Discontinued, limited availability

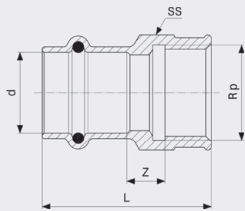
**ADAPTER PIECES/ADAPTER ELBOWS**



**Profipress CR Adapter**  
- chrome-plated gunmetal  
**Model 2211CR**

article	d	R	Z	L	SS
706 852	12	3/8	18	35	17
706 869	12	1/2	20	37	17
706 876	15	1/2	24	46	19

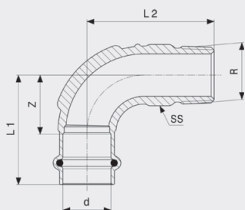
SS = wrench size



**Profipress CR Adapter**  
- chrome-plated gunmetal  
**Model 2212CR**

article	d	Rp	Z	L	SS
706 883	12	1/2	6	39	26
706 890	15	1/2	7	44	26

SS = wrench size

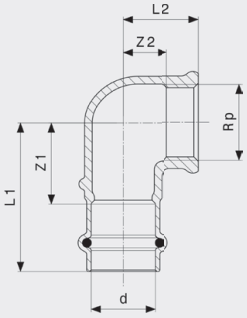


**Profipress CR Adapter elbow 90°**  
- chrome-plated gunmetal  
**Model 2214CR**

article	d	R	Z	L1	L2	SS
706 265*	12	3/8	19	36	40	15
706 272*	12	1/2	19	36	44	17
706 296*	15	1/2	16	38	34	19
706 289*	15	3/8	23	45	47	17

SS = wrench size

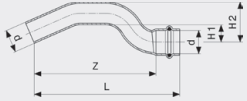
\* = Discontinued, limited availability



**Profipress CR Adapter elbow 90°**  
- chrome-plated gunmetal  
**Model 2214.2CR**

article	d	Rp	Z1	Z2	L1	L2
706 302*	12	3/8	20	5	38	16
706 319	12	1/2	22	5	40	20
706 326*	15	1/2	22	7	44	22

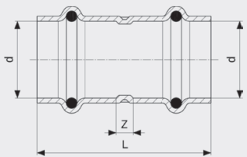
\* = Discontinued, limited availability



**Profipress CR Crossover**  
- chrome-plated copper  
**Model 2427CR**

article	d	Z	L	H1	H2
706 838	12	82	100	12	24
706 845	15	93	115	12	27

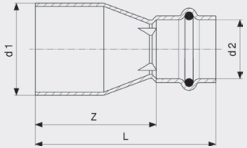
**COUPLINGS**



**Profipress CR Coupling**  
- chrome-plated copper  
**Model 2415CR**

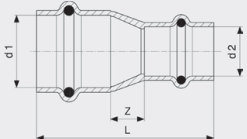
article	d	Z	L
706 463	12	3	39
706 470	15	3	47
706 487	18	5	49

**REDUCTIONS**



**Profipress CR Reducer**  
- chrome-plated copper  
**Model 2415.1CR**

article	d1	d2	Z	L
706 524	15	12	32	50
706 531	18	12	35	53
706 548	18	15	32	54



**Profipress CR Reducing coupling**  
- chrome-plated copper  
**Model 2415.2CR**

article	d1	d2	Z	L
706 555	15	12	8	48

order code	page	order code	page	order code	page	order code	page	order code	page
706 142	4								
706 159	4								
706 166	4								
706 173	4								
706 180	4								
706 197	4								
706 203	4								
706 210	4								
706 227	4								
706 234	4								
706 241	4								
706 258	4								
706 265	5								
706 272	5								
706 289	5								
706 296	5								
706 302	6								
706 319	6								
706 326	6								
706 333	5								
706 340	5								
706 357	5								
706 364	5								
706 371	5								
706 388	5								
706 395	5								
706 401	5								
706 418	5								
706 425	5								
706 432	5								
706 449	5								
706 463	6								
706 470	6								
706 487	6								
706 524	6								
706 531	6								
706 548	6								
706 555	6								
706 838	6								
706 845	6								
706 852	5								
706 869	5								
706 876	5								
706 883	5								
706 890	5								

model no.	page	model no.	page	model no.	page	model no.	page	model no.	page
2211CR	5								
2212CR	5								
2214.2CR	6								
2214CR	5								
2415.1CR	6								
2415.2CR	6								
2415CR	6								
2416.1CR	4								
2416CR	4								
2418CR	5								
2426.1CR	4								
2426CR	4								
2427CR	6								