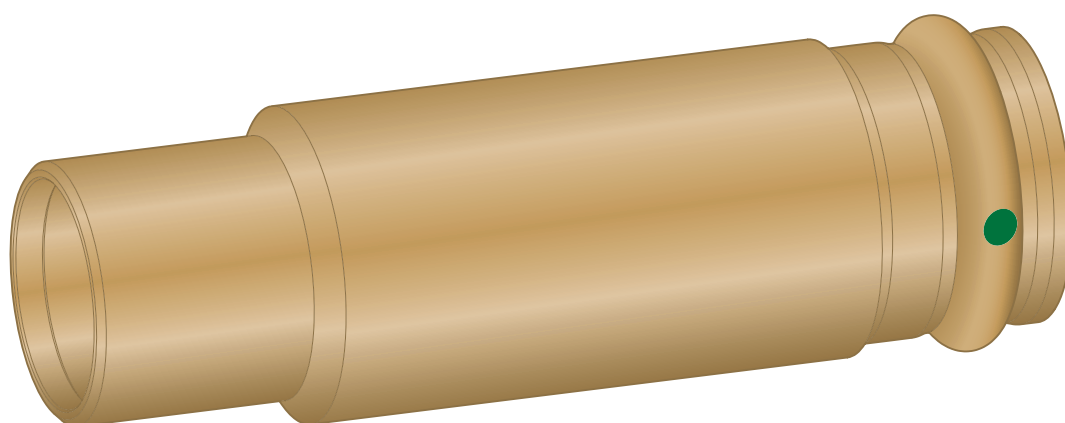


Instructions for Use

Sanpress-sliding sleeve



for the subsequent installation of a T-piece in a metal Viega
piping system with compression connectors

Model
0715.4

viega

Table of contents

1	About these instructions for use	3
1.1	Target groups	3
1.2	Labelling of notes	3
1.3	About this translated version	4
2	Handling	5
2.1	Assembly information	5
2.1.1	Mounting instructions	5
2.2	Assembly	5
2.2.1	Installing the sliding sleeve	5
2.3	Disposal	7

1 About these instructions for use

Trade mark rights exist for this document; for further information, go to viega.com/legal.

1.1 Target groups

The information in this manual is directed at heating and sanitary professionals and trained personnel.

Individuals without the abovementioned training or qualification are not permitted to mount, install and, if required, maintain this product. This restriction does not extend to possible operating instructions.

The installation of Viega products must take place in accordance with the general rules of engineering and the Viega instructions for use.

1.2 Labelling of notes

Warning and advisory texts are set aside from the remainder of the text and are labelled with the relevant pictographs.



DANGER!

This symbol warns of possible life-threatening injury.



WARNING!

This symbol warns of possible serious injury.



CAUTION!

This symbol warns of possible injury.



NOTICE!

This symbol warns of possible damage to property.



This symbol gives additional information and hints.

1.3 About this translated version

This instruction for use contains important information about the choice of product or system, assembly and commissioning as well as intended use and, if required, maintenance measures. The information about the products, their properties and application technology are based on the current standards in Europe (e.g. EN) and/or in Germany (e.g. DIN/DVGW).

Some passages in the text may refer to technical codes in Europe/Germany. These should serve as recommendations in the absence of corresponding national regulations. The relevant national laws, standards, regulations, directives and other technical provisions take priority over the German/European directives specified in this manual: The information herein is not binding for other countries and regions; as said above, they should be understood as a recommendation.

2 Handling

2.1 Assembly information

2.1.1 Mounting instructions

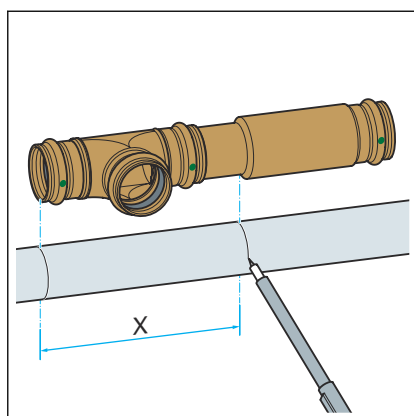
Checking system components

System components may, in some cases, become damaged through transportation and storage.

- Check all parts.
- Replace damaged components.
- Do not repair damaged components.
- Contaminated components may not be installed.

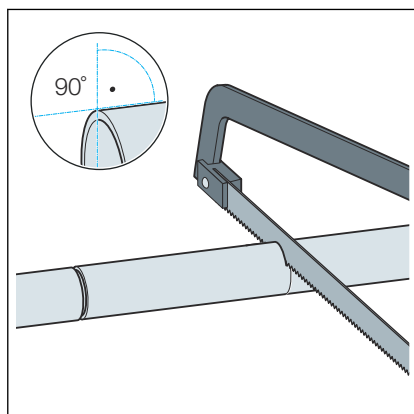
2.2 Assembly

2.2.1 Installing the sliding sleeve

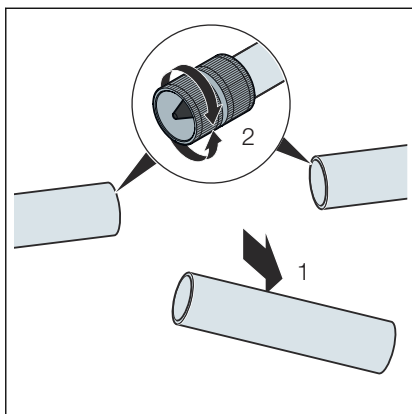


- Mark the pipe cut-out, but do not connect the T-piece and the sliding sleeve.

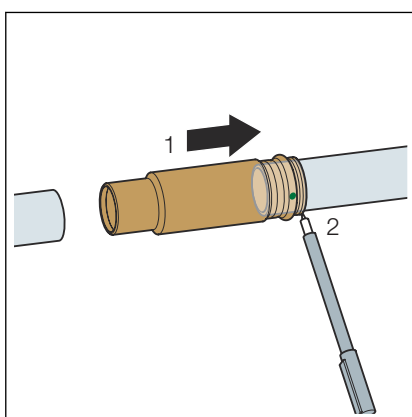
x = total length of the T-piece + length of the insertion end of the sliding sleeve



- Cut out the piece of pipe, making sure that the cut is at a right angle.

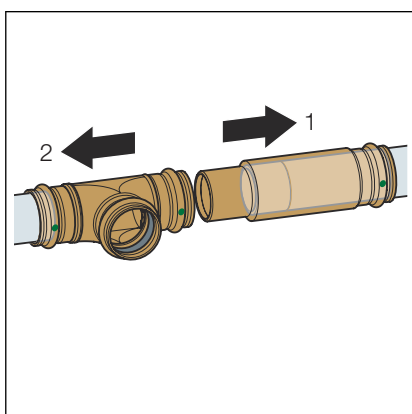


► Deburr the pipe ends.

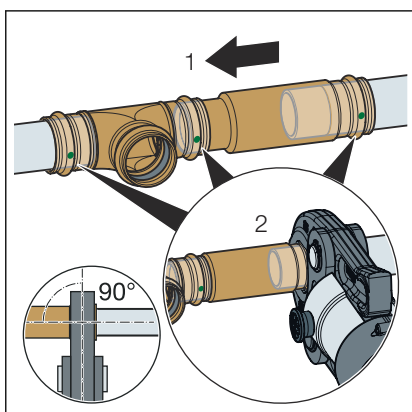


► Mark the minimum insertion depth on the pipe ends.

► Push the sliding sleeve all the way on.



► Push the T-piece all the way on.



► Push the sliding sleeve all the way into the T-piece.

► Make the compression joint according to the instructions of the piping system.

2.3 Disposal

Separate the product and packaging materials (e. g. paper, metal, plastic or non-ferrous metals) and dispose of in accordance with valid national legal requirements.



Viega GmbH & Co. KG
service-technik@viega.de
viega.com

INT • 2022-08 • VPN200538

