

Instructions for Use

Press-in nozzle



for T-pieces of the Propress system with branch DN15 or DN20
mm in customised dimensioned supply lines

Model
0711.5

Table of contents

1	About these instructions for use	3
	1.1 Target groups	3
	1.2 Labelling of notes	3
	1.3 About this translated version	4
2	Product information	5
	2.1 Standards and regulations	5
	2.2 Intended use	5
	2.2.1 Areas of use	5
	2.3 Product description	6
	2.3.1 Overview	6
	2.3.2 Compatible T-pieces	8
3	Handling	9
	3.1 Assembly	9
	3.1.1 Pressing the connection	9
	3.2 Disposal	10

1 About these instructions for use

Trade mark rights exist for this document; for further information, go to viega.com/legal.

1.1 Target groups

The information in this manual is directed at heating and sanitary professionals and trained personnel.

Individuals without the abovementioned training or qualification are not permitted to mount, install and, if required, maintain this product. This restriction does not extend to possible operating instructions.

The installation of Viega products must take place in accordance with the general rules of engineering and the Viega instructions for use.

1.2 Labelling of notes

Warning and advisory texts are set aside from the remainder of the text and are labelled with the relevant pictographs.



DANGER!

This symbol warns of possible life-threatening injury.



WARNING!

This symbol warns of possible serious injury.



CAUTION!

This symbol warns of possible injury.



NOTICE!

This symbol warns of possible damage to property.



This symbol gives additional information and hints.

1.3 About this translated version

This instruction for use contains important information about the choice of product or system, assembly and commissioning as well as intended use and, if required, maintenance measures. The information about the products, their properties and application technology are based on the current standards in Europe (e.g. EN) and/or in Germany (e.g. DIN/DVGW).

Some passages in the text may refer to technical codes in Europe/Germany. These should serve as recommendations in the absence of corresponding national regulations. The relevant national laws, standards, regulations, directives and other technical provisions take priority over the German/European directives specified in this manual: The information herein is not binding for other countries and regions; as said above, they should be understood as a recommendation.

2 Product information

2.1 Standards and regulations

The following standards and regulations apply to Germany / Europe. National regulations can be found on the relevant web site of your country at viega.com.au/standards

Regulations from section: Application areas

Scope / Notice	Regulations applicable in Germany
Specifications for installations inside buildings conveying water for human consumption	DIN 1988-300

2.2 Intended use



Discuss use of the system for application areas and media other than those described with the Viega Service Center.

2.2.1 Areas of use

The use of the press-in nozzle is intended for distribution pipes dimensioned according to requirements in connection with the Viega Propress, Sanpress, Sanpress Inox or Raxofix press-fit systems.

In combination with a ring system, the press-in nozzle supports the exchange of water in connected, rarely used, branched draw-off points such as for sinks, garden sprinklers or heater filling.

The press-in nozzle is suitable

- for water exchange in branched ring systems to infrequently used draw-off points up to a length of 15 m (guideline).
- for installation between two T-pieces of the Propress system with a DN15 or DN20 branch.
- for installation in cold water distribution lines (e.g. riser pipe).

The distribution lines must be dimensioned as necessary, in accordance with applicable standards and regulations, see [↗](#) 'Regulations from section: Application areas' on page 5.

2.3 Product description

2.3.1 Overview

Installation situation

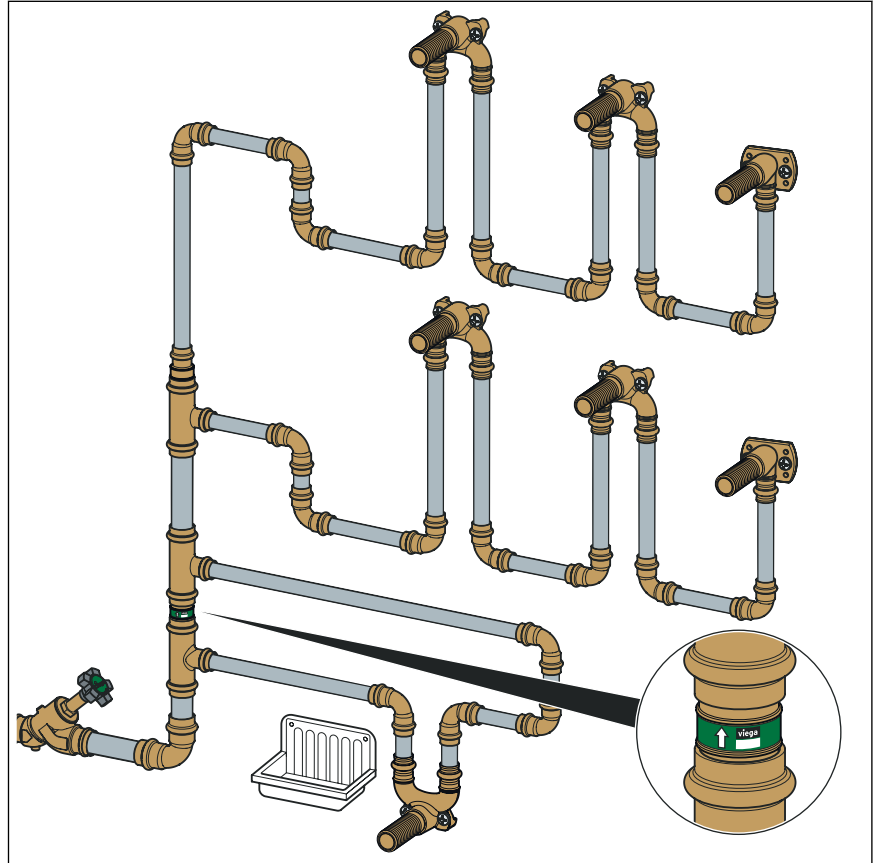


Fig. 1: Press-in nozzle installation situation

Both T-pieces must be connected in a ring system. Daisy-chain back-plated elbows can be used.

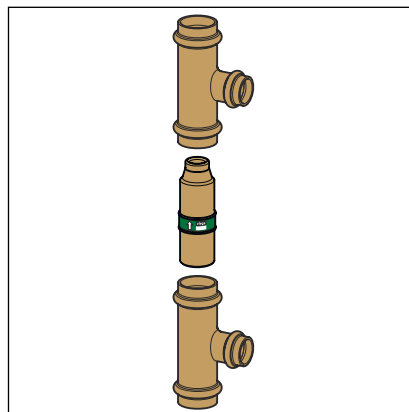


Fig. 2: Press-in nozzle between two T-pieces

Operating mode

The press-in nozzle is installed in **cold water distribution pipes** (e.g. riser pipe) fitted between two T-pieces (Propress, Sanpress system or Sanpress Inox).

Drinking water taps in the flow direction behind the press-in nozzle move the entire branching ring system volume of the pipe section and exchange the water.

Water draw-offs in the building cause a slight pressure difference in the press-in nozzle. The pressure difference supports the water exchange of the connected ring system.

Technical data

- Material: Silicon bronze
- Plug-in end for press connections
- in acc. with the Venturi principle

The model is available in the following dimensions:

DN25, DN32, DN40

Ring system application limits – Propress / Sanpress / Sanpress Inox

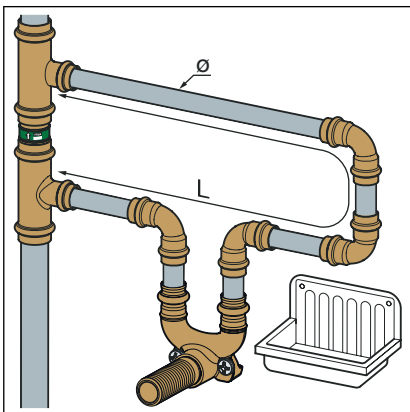


Fig. 3: Propress ring system

Daisy-chain backplated elbows are suitable for the ring system. For $L \leq 15$ m and $\varnothing = 15$ mm, the following maximum quantities are possible:

- Elbows ≤ 10 pc.
 - Propress: Model 0716
- Daisy-chain backplated elbows ≤ 2 pc.
 - Propress: Model 0728.7

Ring system application limits – Raxofix

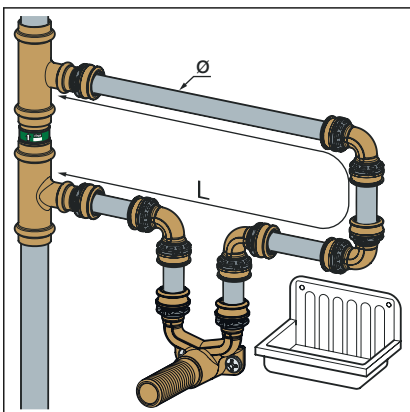


Fig. 4: Raxofix ring system

Daisy-chain backplated elbows and/or wall plate T-pieces are suitable for the ring system. For $L \leq 15$ m and $\varnothing = 16$ mm, the following maximum quantities are possible:

- Elbows ≤ 10 pc. (Model 5316)
- Daisy-chain backplated elbows ≤ 2 pc. (Model 5327.7)
- Wall plate T-pieces ≤ 2 pc. (Model 5325.8)

2.3.2 Compatible T-pieces

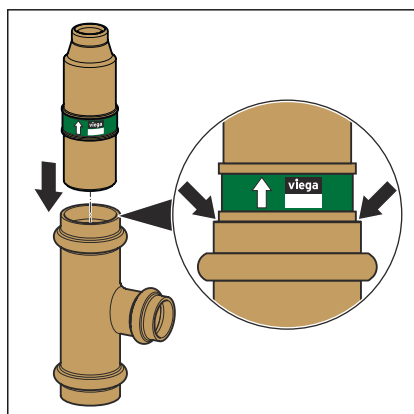
Propress

Art. no.	Ø
579 821	DN25 x 25 x 15
579 838	DN25 x 25 x 20
579 845	DN32 x 32 x 15
668 983	DN32 x 32 x 20
700 942	DN40 x 40 x 20

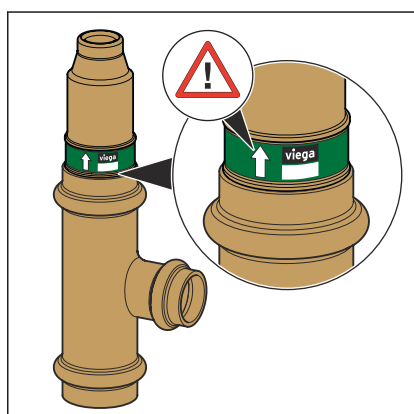
3 Handling

3.1 Assembly

3.1.1 Pressing the connection

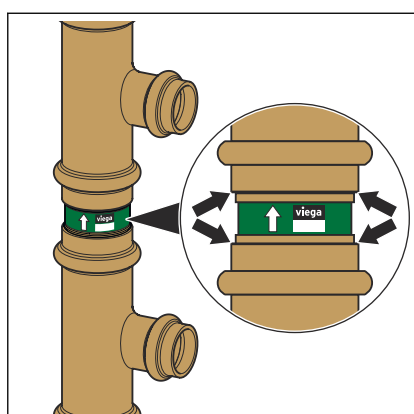


- Push the press-in nozzle into the T-piece up to the stop.



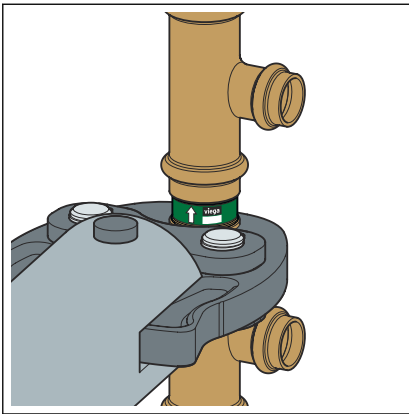
- Check the press-in nozzle is correctly fitted.

NOTICE! Observe the flow direction.



- Mount the second T-piece on the press-in nozzle.

NOTICE! Make sure that the press-in nozzle is mounted as far as it will go.



► Press the two T-pieces, incl. press-in nozzle.

3.2 Disposal

Separate the product and packaging materials (e. g. paper, metal, plastic or non-ferrous metals) and dispose of in accordance with valid national legal requirements.



Viega Pty Limited
support@viega.com.au
viega.com.au

AU • 2022-08 • VPN210047

